

Kingdom of Saudi Arabia
Ministry of Agriculture
National Center for Locust Control and Research
Reporting and Forecasting



Desert Locust Bulletin, June 2016

Issue No. (553)



Danger

Threat

Caution

Calm

P.O.box 24423 Jeddah 21446 Tel: 00966 12 6203000 Fax: 00966 12 6204085
lcctrl@moa.gov.sa locust_jeddah@yahoo.com

LocustJeddah



Nclcr Agriculture



Introduction :

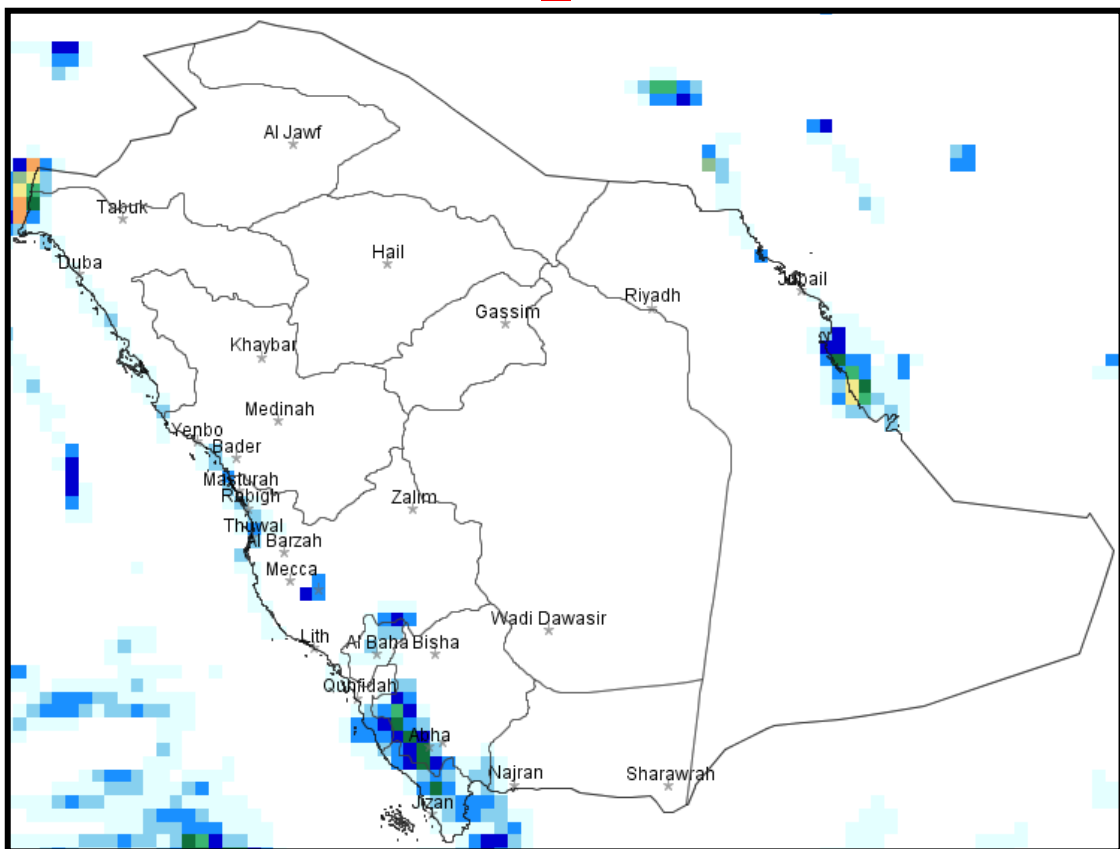
The DL situation remains calm during the month of June 2016 in Saudi Arabia due to high temperature and drought.

Weather and ecology :

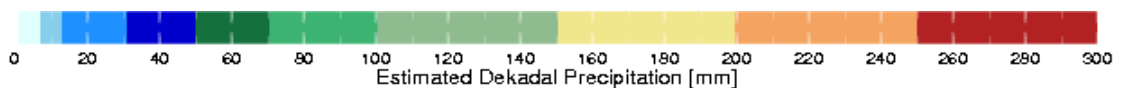
Temperatures too high in most regions of the Kingdom, the highest degree 49^o C was recorded in Makkah, the lower degree 29 °C was recorded in Abha.

The rainfall recorded in Asir, Taif, Abha and Jazan regions .

Rain fall1_10 6 2016



We recorded rains in winter breeding area



Forecasting :

No records of locust activity in the most of breeding areas in KSA, continually calm are expected, particularly in temperature increasing. We could receive some groups or swarms of locusts are coming from Yemen.

Resources :

Eight airplanes (2 helicopter + 6 aircraft) with Micron air.
31 Vehicles for survey .
92 vehicles equip with sprayers (Alva mast & Micronir) with spear parts.
4 Heavy transport vehicles
5 caravan site for camps
4 Small tank of water to camps
1 Bus for training courses
ULV Pesticides and EC Pesticides
Camping equipment (Tent , sleeping chairs,..)
Fax-machines : 6
GPS : 137
eLocust3: 20
Communications (Al Thuraya) 18 communications (BGAN) 9 with faxes and lap-tops
Survey equipment (maps, compass,)
Protective clothes and tools (shoes , eye glasses , muzzles , gloves ,)
Working on Radio transceivers
There are immediate support from the ministry in emergency cases.

DL situation in neighboring countries :

Oman: The Desert Locust situation continues to remain calm during June 2016.

Egypt: No reports received this month.

Sudan: No reports received this month.

Yemen: During June groups and swarms was seen in several places in Shabwah.

Distribution :

This Bulletin were distributed as following :

eclo (FAO) , CRC , EMPRES / CR and dlco

The following countries : (Oman , Sudan , Egypt , Yemen, Eritrea, Ethiopia, Somali, India, Pakistan and Iran)